

Specifications

Specifications

Name: T02 air purifiers Model: KJ750F-T02 Rated voltage: 220V/AC Rated frequency: 50/60Hz
 Input power: 65W Main material: aluminum alloy Dimensions: 806*330*330 (unit of measure: mm)
 Sensors: laser dust sensor/ humidity & temperature sensor/ TVOC odor sensor Net weight: about 13Kg
 Standby-mode power consumption: less than 2W Noise level: less than or equal to 60dB (A)
 Indication: LED indicators and figures Operations: touch screen, WeChatAPP and remote control
 Fan: multi wing-type centrifugal wind wheel and Japanese Shibaura-branded electric motor

Parameters

Clean air delivery rate (CADR): 750 cubic meters/ hour
 Clean air delivery rate for formaldehyde (CADR for formaldehyde): 225 cubic meters/hour
 Particulate matter cumulate clean mass (Particulate matter CCM): P4-level
 Particulate matter purification-related energy efficiency: 11 (high-efficient level)
 Formaldehyde purification-related energy efficiency: 3.5 (high-efficient level)
 Sterilization rate: 99.99% Effective Coverage Area: 52.5-90 square meters Timer settings: 1-8 hours
 Wind speed settings: 1,2,3 and 4 speeds Pollution-level identification: numerical value; light strips
 Remote control: less than 6 meters and within a 45-degree angle range

- 05 -

Filters and Cautions

Pre-filter

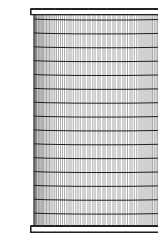
Consist of antibacterial fiber mesh fabric and sterilization nonwoven fabric, in the shape of a bucket, and capable of capturing and filtering large particles such as dust, hairs and skin flakes from the air in 360 degrees.

ATP-HEPA antimicrobial peptide filter

Utilize high-density ATP-HEPA antimicrobial peptide filter to remove airborne particulate matters, such as pollen, dust mite and fiber, specialize in the purification of PM2.5 (particulate matter with a mean aerodynamic diameter of 2.5 μm) under the national standards, and work hard to prevent secondary pollution.

High-efficiency activated carbon layer

Utilize large-sized honeycomb-structured materials made through catalyzing carbon fiber extracted from plants to remove harmful substances, such as formaldehyde, benzene, xylene and TVOC, from the air.



Please visit Agcen official website or contact the local distributors to buy Agcen high-performance combined filters.

Moving

Moving: be sure to stop the air purifier and remove the power plug from the electrical outlet when performing the move;

Installation

The air purifier cannot work if the filter cover plate is not installed correctly;
 The air inlet should be always kept more than 20 cm from obstacles to airflow, such as walls.

AC power cord

Do not excessively twist, pinch, bend or turn back the power cord, or the wire core will be exposed to the air or broken off;
 Do not drag or pull the power cord when unplugging;
 Do not use AC socket that is not compatible with;
 Do not use the provided power cord in other devices;

In use

Please immediately stop the air purifier if you experience anything unusual such as abnormal sounds, strange smells, high-temperature, and fan's irregular rotation;
 Do not put your finger or any object into the air inlet and outlet;
 Do not place hair, fabric, etc. close to the air purifier in case they are sucked into the machine or block the air inlet and outlet;
 Do not sit on, stand by or tilt the air purifier;
 Open the ventilation system when using with another combustion appliance in order to prevent carbon monoxide poisoning.

- 06 -

WARRANTY

First Repair Record: _____ User Name: _____ Product Model: _____

Contact Information: _____ Date of Purchase: _____ Date of Repair: _____

Malfunction Information: _____ Repair Progress: _____ The Original Serial No.: _____

General Terms

If Agcen air purifier's performance failure is not caused by the person, the defective product can be returned, replaced or repaired within seven days from the date of the buyer's receipt of the products. Please go to service centers designated by Agcen company to enjoy free repairs;

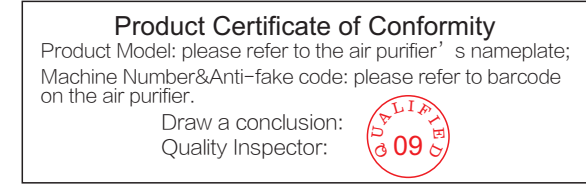
Only products bought through Agcen official website can be returned without giving a reason within seven days. This policy does not apply to those that are damaged by the person, whose packaging boxes are broken, or whose parts are not completed. Buyers should be responsible for the return shipping fees when returning products without giving reasons.

Products can be replaced within 30 days from the date of the buyer's receipt of the products. An air purifier comes with a whole year's warranty, and the main parts and components with three years'. Please properly keep the original delivery receipt and the original purchase invoice which are regarded as valid evidence of the purchasing.

What this Warranty Does Not Cover:

The three-year warranty has expired;

The buyer will not be liable for any damages of any kind if the products has been repaired unauthorized by Agcen company; trouble with the products is caused by misuse, collision, neglect, use contrary to product instructions, immersion in liquid, accident, alteration and dismantling; products' labels, serial number and false proof mark have been tore up, removed or altered.



Operator: Agcen Environmental Protection Technology Co., Ltd. Official website: www.agcen.com Service hotline: 400-684-0002
 Standards followed: GB4706.1-2005, GB4706.45-2008 and GB/T18001-2015.

- 07 -

Agcen Air Purifier

KJ750F-T02 Instruction Manual



Read instructions before operating. Retain for future reference.

Brief introduction

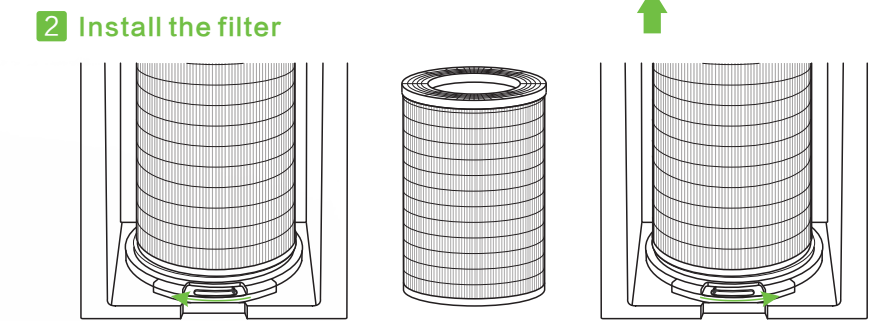


- 01 -

Installation



- 1 Take out the power cord**
Unpack the product, and take out the power cord.
- 2 Install the filter**
- 3 Turn on the current.**
Connect the power cord at the bottom of the host power supply interface, and then plugged into a power supply.



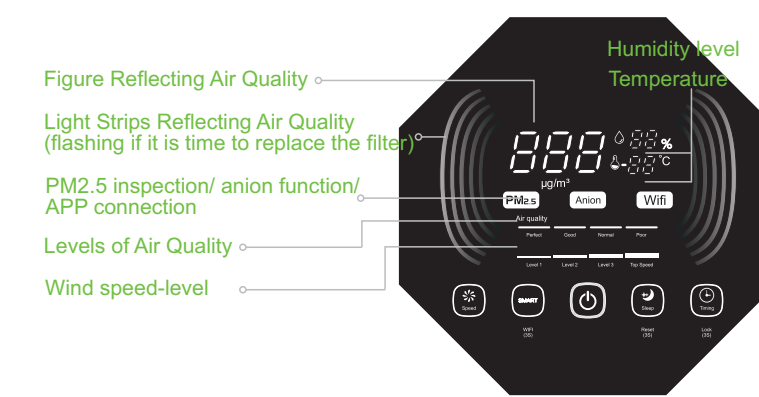
Open the air purifier's rear cap for holding the filter by sliding it from the right to the left, and the chassis will thereupon move lower; take out the filter.

Open the new filter's packaging bag, and put it in the air purifier;

When the new filter is put in place, rotate and move back the chassis to the original place, and slide the holding cap back to lock the filter (pressing the sleep button for 3 seconds to complete the replacement of the filter).

- 02 -

Screen display introduction



Start Button:When the air purifier is powered up, the "Start button" turns red, and enters the standby mode; press the button to start the machine; the standby-mode power consumption is less than 2W; separate the machine from its source of power to shut it down completely (Note: in the smart mode, anion function runs automatically, and sensor begins to inspect the machine).

Smart Button:When started, the air purifier works in the smart mode by default, and then automatically switches wind speed to a proper one in accordance with the air quality at that time. Press other buttons (Sleep and Wind Speed) to change it into the manual mode, and the Smart button stops working.

WiFi:When start the air purifier for the first time, press Smart button for 3 seconds, and the icon "WiFi" on the control panel flashes; scan the QR code on the machine's main body through Agcen WeChat public account, and when the connection is completed, the machine can be controlled via mobile phone; in such operation mode, the light of the icon "WiFi" is always on.

Wind Speed Button:Press the Wind Speed button on the control panel or relevant buttons on the remote controller to set the wind speed at Level 1, Level 2, Level 3 and Top Speed and back to Level 1 in circles, and when a certain speed is chosen, the corresponding indicator light will be turned on.

Sleep Mode:Press the Sleep button on the control panel or relevant button on the remote controller, and then the air purifier enters the Sleep mode; electric motor runs at the slowest speed; only the Sleep button gives out light on the control panel, and other buttons "Anion and Timer" are at the original state; press other buttons (except Start button) to exit the Sleep mode, and the machine goes back to the state before entering the Sleep mode.

- 03 -

Users' Guide

Filter replacement alert/instructions:When started, the air purifier will automatically calculate how long the filter can be used according to the machine's running conditions and internally stored algorithm, and light strips on the control panel will flash all the time if the filter needs to be replaced. Start the air purifier when the filter is replaced, and press the Sleep button for 3 seconds to stop the flash of the light strips; the corresponding indicator light will be turned off, and the time memory will be cleared up; now the replacement of the filter is completed successfully.

Timer Setting:When started, the air purifier shows the current PM 2.5 conditions on its control panel automatically; press the Timer button, and then the control panel shows a string of numbers "0-1-2-3-4-5-6-7-8-0"; when choose the number "0", the air purifier exits the Timer mode, and the Timer button light goes off; when the timing length has been chosen, if no other operations are carried out or no other buttons are pressed within 10 seconds, the air purifier will switch to the mode automatically.

V-chip:Press the Timer button on the control panel for 3 seconds, and the red light turns on, which means the air purifier runs in the V-chip mode; press the button for 3 seconds again, and the red light turns off, which means the machine exits the V-chip mode and other buttons are unlocked.

Falling-down prevention:When the air purifier tilts at a 90 degree angle or over, the machine will be powered off automatically; when put into its correct upright position, the machine enters the standby mode by default; press the Start button to see if the machine enters the Smart mode, and if so, it is confirmed that the machine can be used safely.

APP Control:Users can scan the QR code on the air purifier with the mobile devices, WeChat scanning tool, and if it is the first time to connect the machine with WeChat, please choose "Connecting the Machine to the Internet (WiFi is required)"; if the machine has already connected to the internet, please choose "Connected Already, Skip the Step". If a successful connection is completed, the control panel on WeChat will be displayed.

Note: if the connection fails, please try again; please contact distributors if many failures happen.



- 04 -